

## Aperio™ AH15 1-to-1 Standard Wiegand Communication Hub

### Product Description

The Aperio™ AH15 communication hub is located in the proximity of the door and provides radio communication to an Aperio™ door device fitted to the door. It connects with the Norpass access control panel via the reader interface and transfers the card number to the panel in Wiegand format. The access control panel makes the access decisions in the same way as it does with standard card readers and sends the door release signal using the LED control lead.

The use of Aperio™ saves on cost and installation time for new installations as there is no need to install a separate reader and maglock/doorstrike.



### Features

- ▶ For connection to Norpass system via Wiegand interface
- ▶ Provides radio communication to the Aperio™ door devices
- ▶ Integrated antenna
- ▶ Encrypted radio communication
- ▶ Fits standard electrical installation boxes
- ▶ LED for status visualisation

### Specifications

Approvals: CE

#### Physical

Dimensions (H x W x D): 82 x 82 x 13 mm

#### Electrical

Power supply: 8 - 24 VDC

Current: 250 mA, Minimum 80mA at 12VDC

#### Radio Communications

Radio standard: IEEE 802.15.4 (2.4 GHz) - 16 channels (11-26)

Encryption: AES 128 bits (radio communication)

#### Environmental

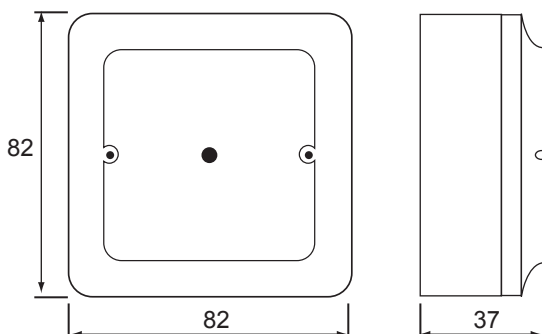
Protection: IP 20

Operating temp: 5°C to 35°C

Humidity: < 95% non-condensing

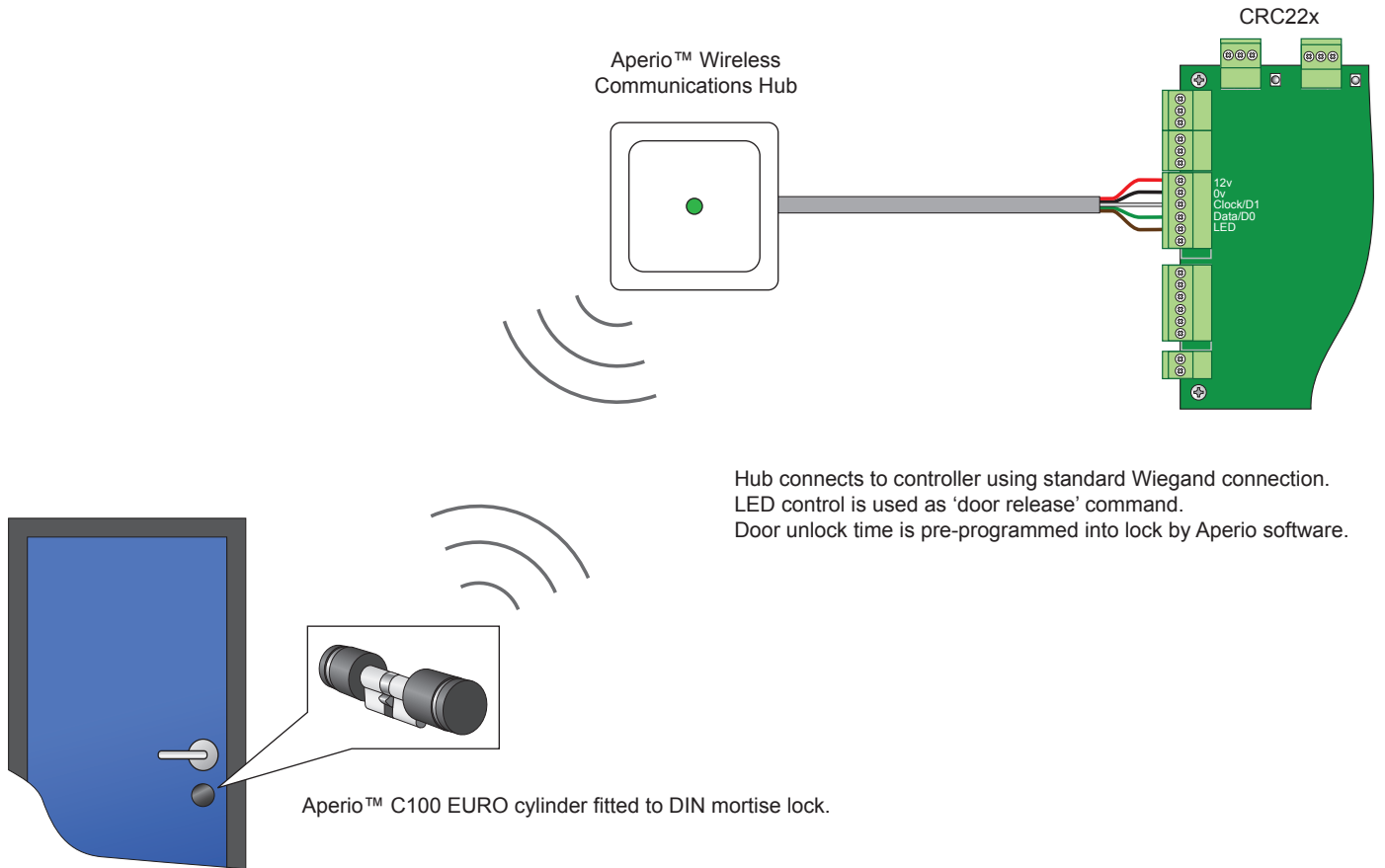
#### Indicators

Status: LED (red/green/orange)



## Aperio™ AH15 1-to-1 Standard Wiegand Communication Hub

### Aperio™ Integration with Norpass



### Ordering Information

<b>C100</b>	<b>C100 EURO Standard cylinder complete with communications Hub</b>
<b>E100</b>	<b>E100 EURO Standard escutcheon complete with communications Hub</b>